

Patch panel, Category 3, 25xRJ45/u

P/N: T-3529

Cat. 3

16
MHz

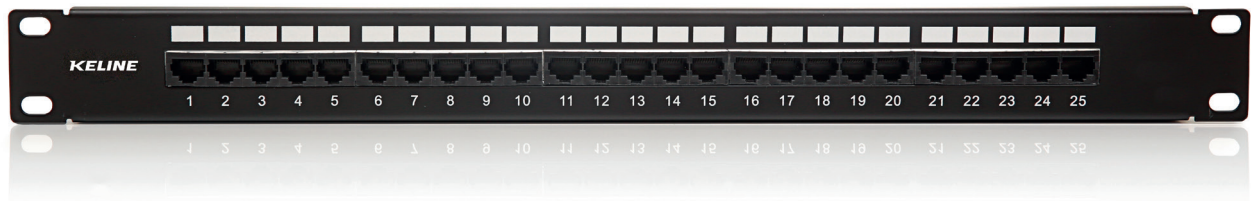


Features

- LSA termination blocks
- fast and easy installation using Krone® insertion tool
- connects voice services from backbone networks into the structured cabling
- enables transmission of all analog and digital voice protocols excluding IP telephony
- guarantees a bandwidth of 16 MHz
- cable ties for gripping (25 pcs)
- designed for 19" cabinets
- integrated cable management

Application

- primary (Campus), secondary (Riser)
- IEEE 802.3: 10BASE-T
- ISDN



Construction

Height	1U (44,5 mm)
Width	19" (482,6 mm)
Depth (including cable management)	133 mm
Material	steel
Colour	black RAL 9005
Surface	structured, matt

Mechanical properties

Suitable for cables with solid wires	from 0,41 to 0,64 mm (od AWG 26 do AWG 22)
Insertion / extraction cycles RJ45	min. 750
IDC retermination	min. 25
Contact pin material	gold plated phosphor-bronze alloy
IDC contact material	nickel plated phosphor/bronze alloy

Electrical properties

Current rating	1,5 A max
Insulation resistance	500 M Ω max
Dielectric strenght	1000 V AC, 60 Hz 1 min
Contact resistance	20 m Ω max