

Patch panel, Category 5E, 24xRJ45/u

P/N: KEP-C5E-U-TL

1
Gigabit

Cat. 5E

100
MHz

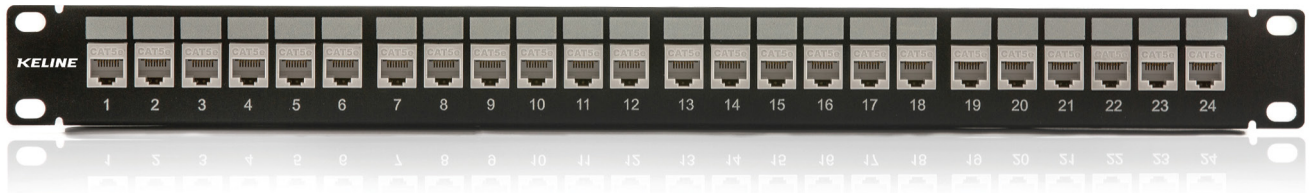


Features

- 24 keystone jacks included (KEJ-C5E-U-TL)
- designed for 19" cabinets
- integrated cable management
- cable ties for gripping (24 pcs)
- not shielded against electromagnetic interference
- set of M6 screws and captive nuts (4 pcs)
- grounding screw and washer (1 pc)

Application

- primary (Campus), secondary (Riser), tertiary (Horizontal)
- IEEE 802.3: 10BASE-T; 100BASE-T; 1000BASE-T
- IEEE 802.5: 16 MB; ISDN; FDDI; ATM



Construction

Height	1U (44,5 mm)	
Width	19" (482,6 mm)	
Depth (including cable management)	152 mm	
Material	front face	steel
	cable management	nickel-plated steel, corrosion-resistant
Colour	black RAL 9005	
Surface	structured, matt	

Keystone jack KEJ-C5E-U-TL mechanical properties

Note: for detailed information see datasheet for keystone jack KEJ-C5E-U-TL

Suitable for installing on	cables with solid wires	od 0,51 do 0,64 mm (od AWG 24 do AWG 22)
Insertion / extraction cycles	min. 750	
Temperature range	installation	-10 °C až +60 °C
	operational	-40 °C až +70 °C
IDC retermination	min. 20	
Contact pin material	phosphor-bronze alloy coated with 6 μ of gold	

