

Patch panel, Category 6, 24xRJ45/s

P/N: KEP-C6-S-TL

1
Gigabit
Cat.6
250
MHz

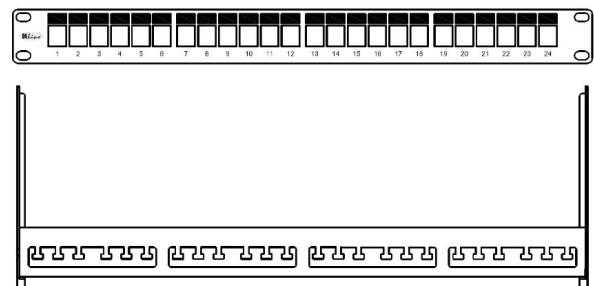
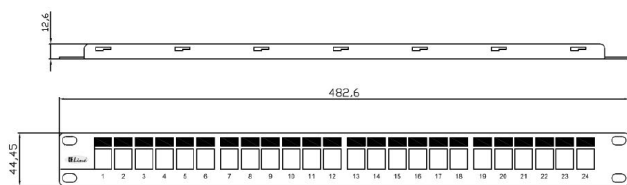
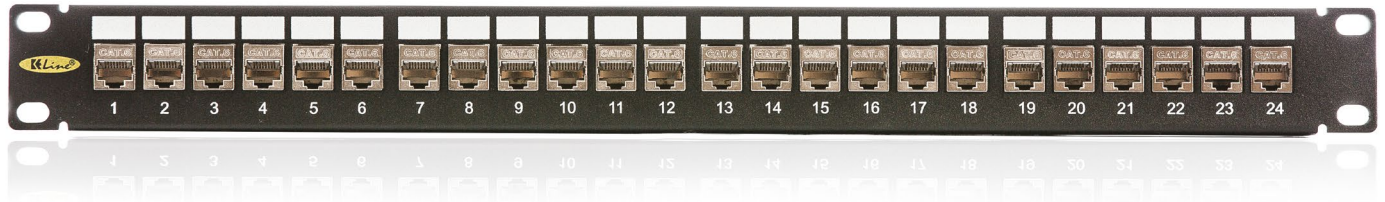


features

- 24 keystone jacks included (KEJ-C6-S-TL)
- designed for 19" cabinets
- integrated cable management
- cable ties for gripping (24 pcs)
- set of M6 screws and captive nuts (4 pcs)
- grounding screw and washer (1 pc)

application

- primary (Campus), secondary (Riser), tertiary (Horizontal)
- IEEE 802.3: 10Base-T; 100Base-T; 1000Base-T
- IEEE 802.5 16 MB; ISDN; FDDI; ATM



construction

| | | |
|------------------------------------|------------------|--|
| Height | 1U (44,5 mm) | |
| Width | 19" (482,6 mm) | |
| Depth (including cable management) | 152 mm | |
| Material | front face | steel |
| | cable management | nickel-plated steel, corrosion-resistant |
| Color | black RAL9005 | |
| Surface | structured, matt | |

Keystone jack KEJ-C6-S-TL mechanical properties

Note: for detailed information see datasheet for keystone jack KEJ-C6-S-TL

| | | |
|-------------------------------|---|--|
| Suitable for installing on | cables with solid wires | from 0,51 to 0,64 mm (AWG 24 - AWG 22) |
| Contact pin material | phosphor-bronze alloy coated with 6 μ of gold | |
| Insertion / extraction cycles | min. 750 | |
| Temperature range | operation | -40°C to +70°C |
| | installation | -10°C to +60°C |
| IDC retermination | min.20 | |